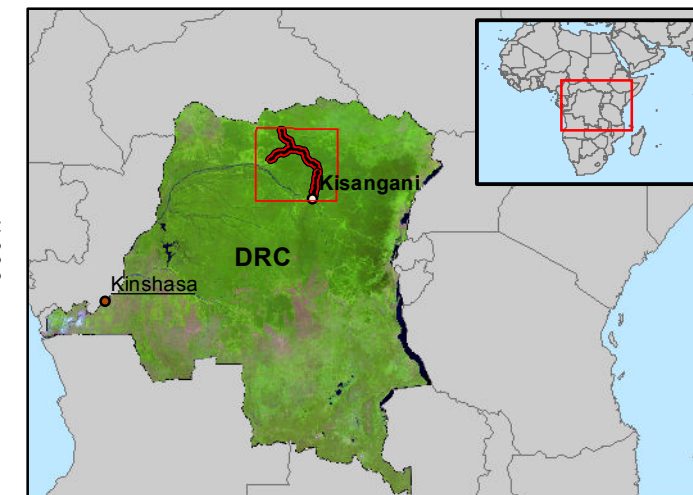




Status 27/05/2011

Road monitoring RN4

Location



Local projection: UTM Zone 32 , Datum: WGS 84
Geographic projection: Lat/Lon (DMS), Datum: WGS 84



Scale 1:1.500.000 for A3 prints

Data sources

Satellite data (Landsat mosaic)
date: 2000 - 2010
copyright: OSFAC, 2010
resolution: 60 m

Other data
Map analysis - © EUROSENSE
Vector - RGC (Référentiel
Géographique Commun)

Description

This map was produced by the G-MOSAIC Critical Assets Monitoring Service (CTA). The CTA service is monitoring the rehabilitation of the road 'RN4' in DRC, which is connecting Kisangani up north with Buta, Dulia, Bondo and Monga towards the border with the Central African Republic in Ndu. The road rehabilitation is planned from Kisangani up to Bondo and Bunduki. The road works started in Kisangani in September 2009. On 27/05/2011, the road works had reached 50 km North of Banalia.

Legend

Roads	Water
RN4 (under rehabilitation)	River
RN4 (status road works on 27/05/2011)	
Protected area	Forest
Rubi-Tele Reserve	Primary forest

Disclaimer

This map has been generated by optimizing the material available. Boundary or naming information implies no endorsement from the producer. Geographic information has limitations due to the scale, resolution, date and interpretation of the original source materials. The producer accepts no legal responsibility or liability whatsoever with regard to the use of this product. Product is covered by the EU Security Regulation 2001/264/EC.

